

NSE5_FMG-7.2^{Q&As}

Fortinet NSE 5 - FortiManager 7.2

Pass Fortinet NSE5_FMG-7.2 Exam with 100% Guarantee

Free Download Real Questions & Answers **PDF** and **VCE** file from:

https://www.leads4pass.com/nse5_fmg-7-2.html

100% Passing Guarantee
100% Money Back Assurance

Following Questions and Answers are all new published by Fortinet Official Exam Center

- ⚙️ **Instant Download** After Purchase
- ⚙️ **100% Money Back** Guarantee
- ⚙️ **365 Days** Free Update
- ⚙️ **800,000+** Satisfied Customers



QUESTION 1

An administrator is replacing a failed device on FortiManager by running the following command:

```
execute device replace sn .
```

Which device name and serial number must the administrator use?

- A. The device name of the new device and serial number of the failed device
- B. The device name and serial number of the failed device
- C. The device name of the failed device and serial number of the new device
- D. The device name and serial number of the new device

Correct Answer: C

QUESTION 2

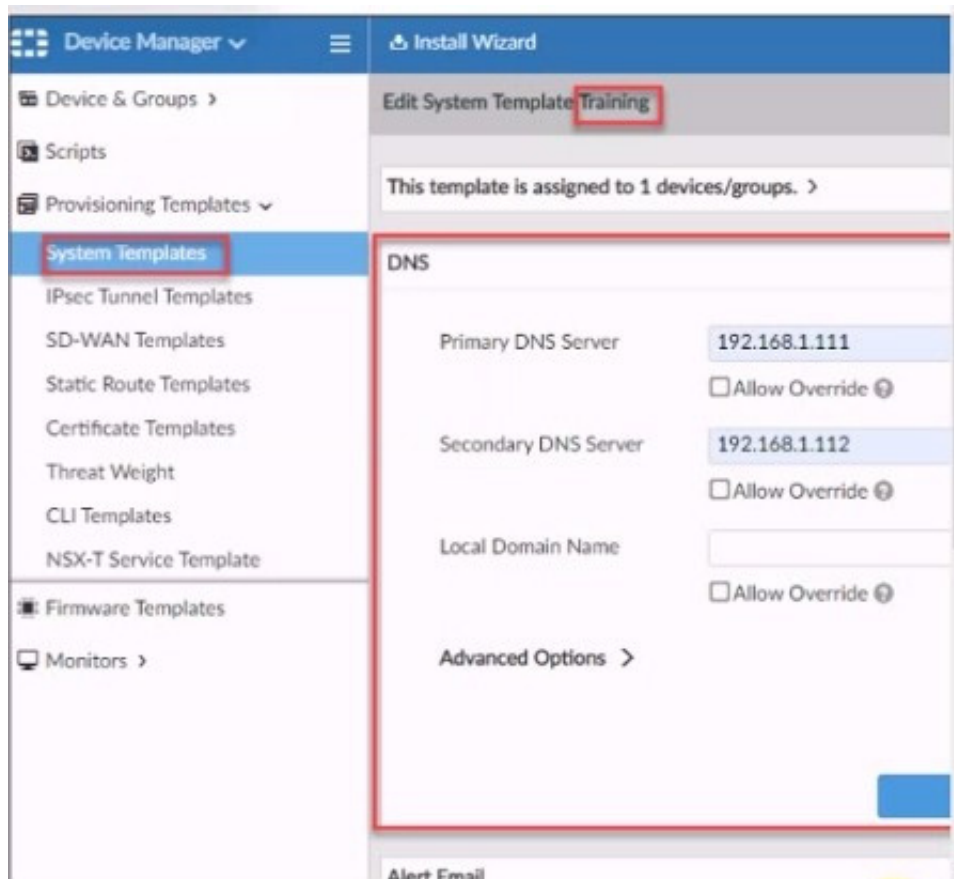
An administrator would like to create an SD-WAN default static route for a newly created SD-WAN using the FortiManager GUI. Both port1 and port2 are part of the SD-WAN member interfaces. Which interface must the administrator select in the static route device drop-down list?

- A. port2
- B. virtual-wan-link
- C. port1
- D. auto-discovery

Correct Answer: B

QUESTION 3

Refer to the exhibit.



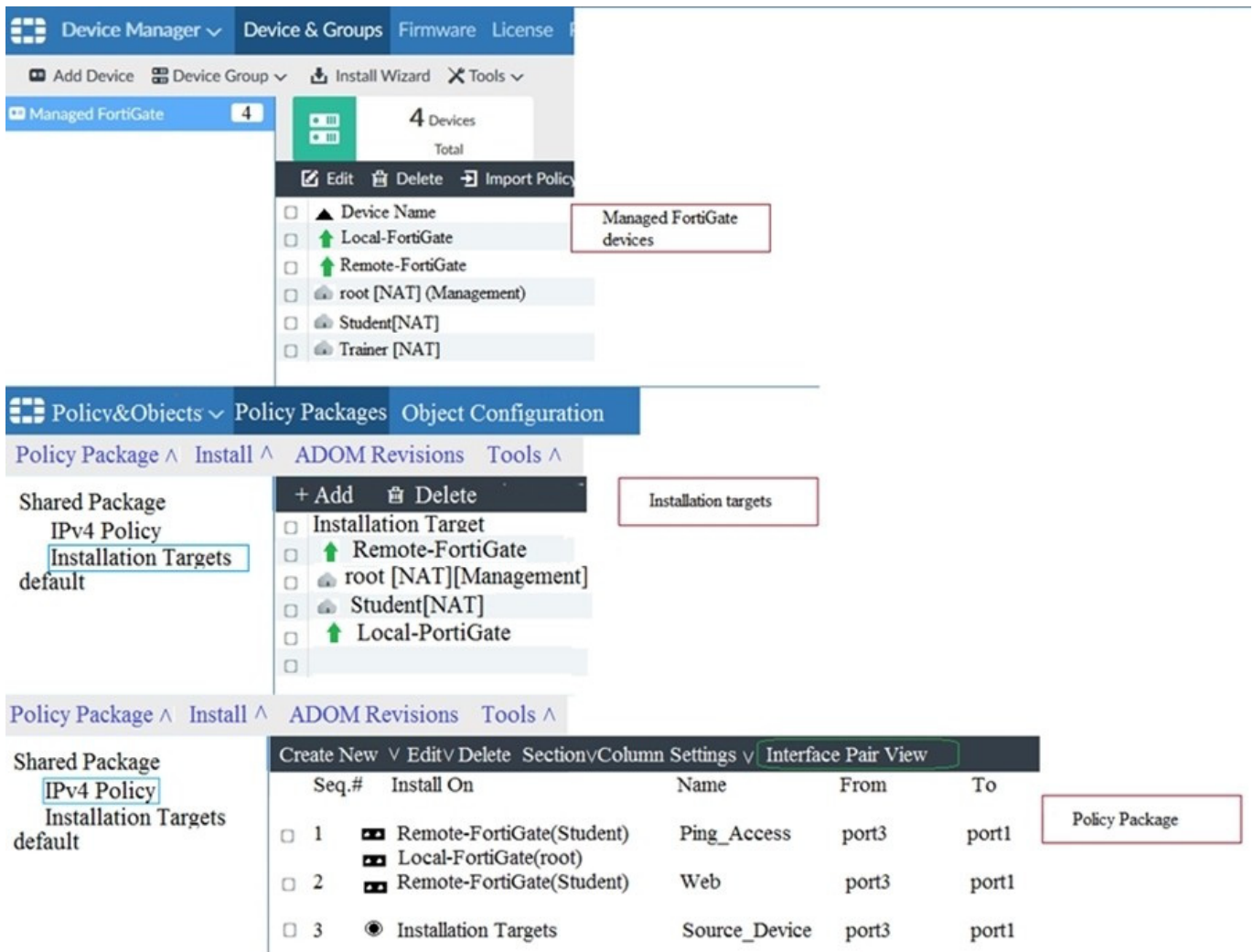
According to the error message why is FortiManager failing to add the FortiAnalyzer device?

- A. The administrator must turn off the Use Legacy Device login and add the FortiAnalyzer device to the same network as Forti-Manager
- B. The administrator must select the Forti-Manager administrative access checkbox on the FortiAnalyzer management interface
- C. The administrator must use the Add Model Device section and discover the FortiAnalyzer device
- D. The administrator must use the correct user name and password of the FortiAnalyzer device

Correct Answer: A

QUESTION 4

View the following exhibit.



Given the configurations shown in the exhibit, what can you conclude from the installation targets in the Install On column?

- A. The Install On column value represents successful installation on the managed devices
- B. Policy seq#3 will be installed on all managed devices and VDOMs that are listed under Installation Targets
- C. Policy seq#3 will be installed on the Trainer[NAT] VDOM only
- D. Policy seq#3 will be not installed on any managed device

Correct Answer: B

QUESTION 5

View the following exhibit:

```
#diagnose fmupdate view-serverlist fds
FortiGuard Server Comm: Enabled
Server Override Mode: Loose
FDS server list :
Index Address          Port    TimeZone  Distance  Source
-----
*0  10.0.1.50             8890    -5         0         CLI
1   96.45.33.89           443     -5         0         FDNI
2   96.45.32.81           443     -5         0         FDNI
...
38  fds1.fortinet.com     443     -5         0         DEFAULT
```

How will FortiManager try to get updates for antivirus and IPS?

- A. From the list of configured override servers with ability to fall back to public FDN servers
- B. From the configured override server list only
- C. From the default serverfds1.fortinet.com
- D. From public FDNI server with highest index number only

Correct Answer: A

Reference:<https://community.fortinet.com/t5/Fortinet-Forum/Clarification-of-FortiManager-s-quot-Server-Override-Mode-quot/td-p/89973>

[NSE5_FMG-7.2 PDF Dumps](#)

[NSE5_FMG-7.2 VCE Dumps](#)

[NSE5_FMG-7.2 Braindumps](#)