

NCP-US-6.5^{Q&As}

Nutanix Certified Professional - Unified Storage (NCP-US) v6.5

Pass Nutanix NCP-US-6.5 Exam with 100% Guarantee

Free Download Real Questions & Answers **PDF** and **VCE** file from:

<https://www.leads4pass.com/ncp-us-6-5.html>

100% Passing Guarantee
100% Money Back Assurance

Following Questions and Answers are all new published by Nutanix
Official Exam Center

-  **Instant Download** After Purchase
-  **100% Money Back** Guarantee
-  **365 Days** Free Update
-  **800,000+** Satisfied Customers



QUESTION 1

An administrator created a bucket for an upcoming project where internal users as well as an outside consultant ... Object Browser. The administrator needs to provide both internal and consultant access to the same bucket.

The organization would like to prevent internal access to the consultant, based on their security policy.

Which two items are required to fulfill this requirement? (Choose two.)

- A. Configure Directory Services under the Access Keys section
- B. Generate access keys based on directory and email-based users.
- C. Install third-party software for bucket access to all users.
- D. Generate access keys using third-party software.

Correct Answer: AB

Explanation: Nutanix Objects supports directory services integration, which allows administrators to configure access keys based on directory and email-based users. This enables granular access control and security for buckets and objects. The administrator can configure directory services under the Access Keys section in Prism Central, and then generate access keys for internal users from the directory service and for the consultant from an email address.

References: Nutanix Objects Administration Guide²

QUESTION 2

Users are complaining about having to reconnecting to share when there are networking issues.

Which files feature should the administrator enable to ensure the sessions will auto-reconnect in such events?

- A. Durable File Handles
- B. Multi-Protocol Shares
- C. Connected Shares
- D. Workload Optimization

Correct Answer: A

Explanation: The Files feature that the administrator should enable to ensure the sessions will auto-reconnect in such events is Durable File Handles. Durable File Handles is a feature that allows SMB clients to reconnect to a file server after a temporary network disruption or a client sleep state without losing the handle to the open file. Durable File Handles can improve the user experience and reduce the risk of data loss or corruption. Durable File Handles can be enabled for each share in the Files Console. References: Nutanix Files Administration Guide, page 76; Nutanix Files Solution Guide, page 10

QUESTION 3

A Files administrator needs to generate a report listing the files matching those in the exhibit.

What is the most efficient way to complete this task?

- A. Use Report Builder in File Analytics.
- B. Create a custom report in Prism Central.
- C. Use Report Builder in Files Console.
- D. Create a custom report in Files Console.

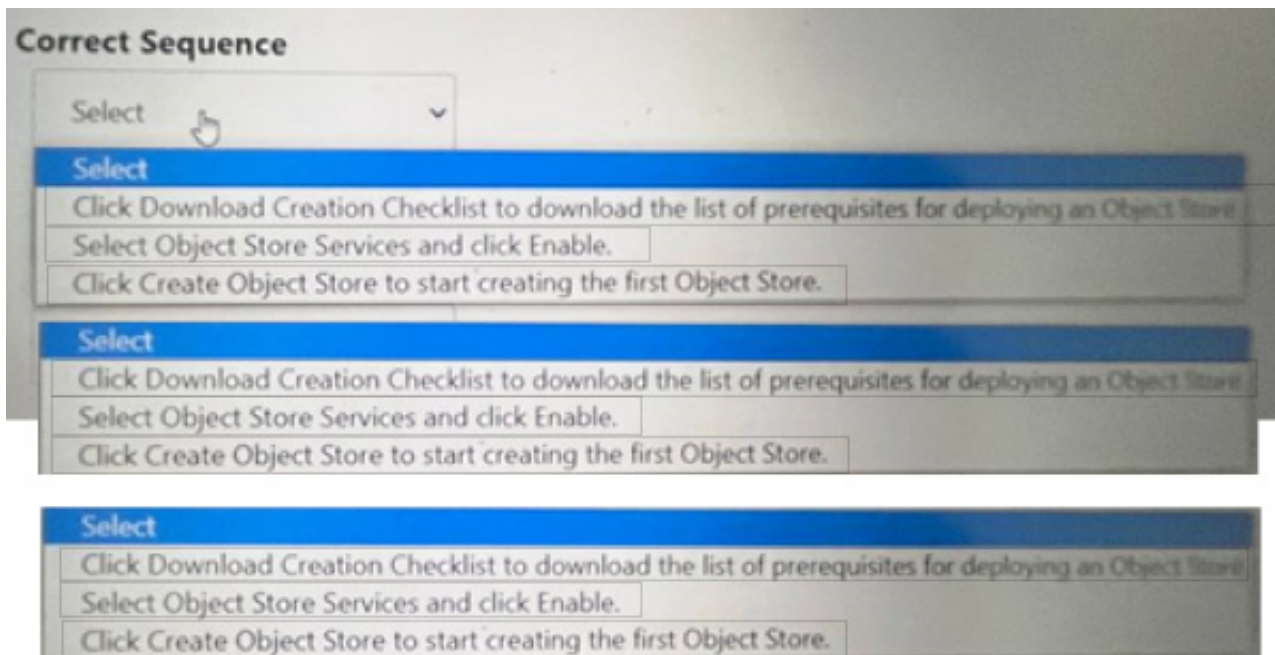
Correct Answer: A

Explanation: The most efficient way to generate a report listing the files matching those in the exhibit is to use Report Builder in File Analytics. Report Builder is a feature that allows administrators to create custom reports based on various filters and criteria, such as file name, file type, file size, file owner, file age, file access time, file modification time, file permission change time, and so on. Report Builder can also export the reports in CSV format for further analysis or sharing. References: Nutanix Files Administration Guide, page 97; Nutanix File Analytics User Guide

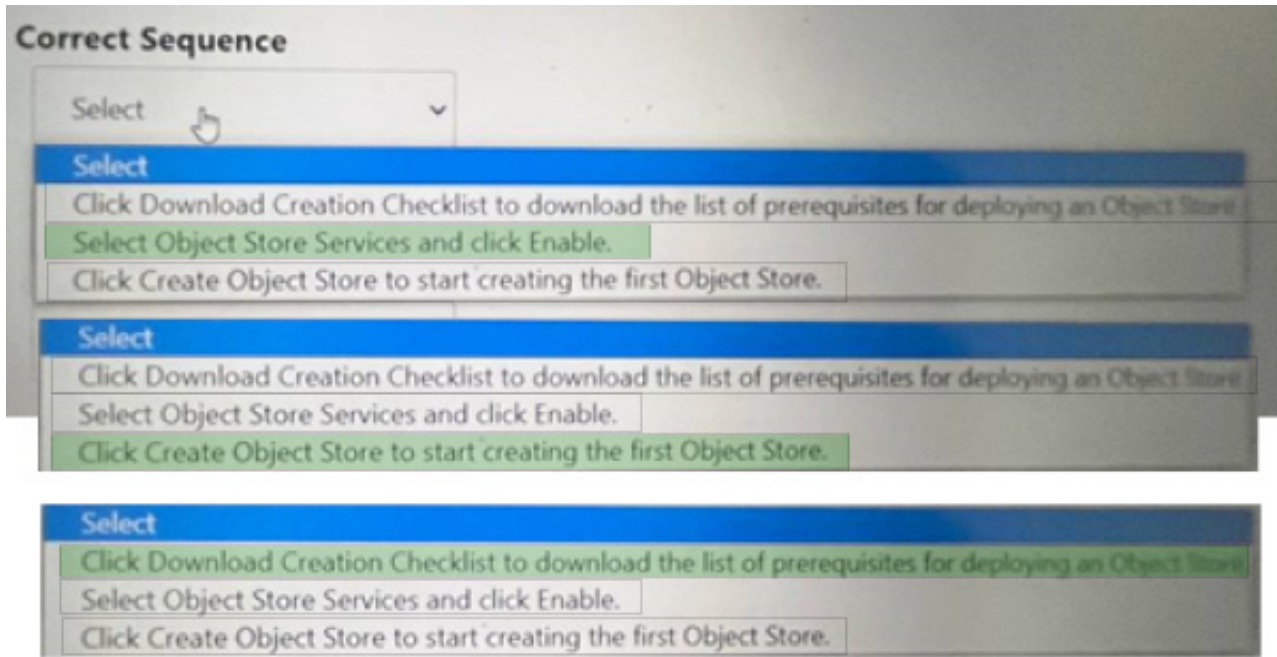
QUESTION 4

Within the Prism Central Entity > Services > Objects menu option, what is the correct task order for creating an object storage?

Hot Area:



Correct Answer:



The correct task order for creating an object store is: Select ObjectStore Service and click Enable Click Create Object Store to start creating the first Object store Click Download Creation Checklist to download the list of prerequisites for deploying an Object store The first step is to enable the ObjectStore Service, which is a service that allows users to create and manage object storage clusters on a Nutanix cluster. The second step is to create an Object store, which is an object storage cluster that provides S3-compatible access to buckets and objects for various applications and users. The third step is to download the Creation Checklist, which is a document that lists the prerequisites and configurations that are required for deploying an Object store, such as cluster details, network details, storage details, etc. The administrator should review and complete the Creation Checklist before proceeding with the deployment of the Object store.

QUESTION 5

Which port is required between a CVM or Prism Central to insights.nutanix.com for Data Lens configuration?

- A. 80
- B. 443
- C. 8443
- D. 9440

Correct Answer: B

Explanation: Data Lens is a SaaS that provides file analytics and reporting, anomaly detection, audit trails, ransomware protection features, and tiering management for Nutanix Files. To configure Data Lens, one of the network requirements is to allow HTTPS (port 443) traffic between a CVM or Prism Central to insights.nutanix.com. This allows Data Lens to collect metadata and statistics from the FSVMs and display them in a graphical user interface. References: Nutanix Files Administration Guide, page 93; Nutanix Data Lens User Guide