

NCP-US-6.5^{Q&As}

Nutanix Certified Professional - Unified Storage (NCP-US) v6.5

Pass Nutanix NCP-US-6.5 Exam with 100% Guarantee

Free Download Real Questions & Answers **PDF** and **VCE** file from:

<https://www.leads4pass.com/ncp-us-6-5.html>

100% Passing Guarantee
100% Money Back Assurance

Following Questions and Answers are all new published by Nutanix
Official Exam Center

-  **Instant Download** After Purchase
-  **100% Money Back** Guarantee
-  **365 Days** Free Update
-  **800,000+** Satisfied Customers



QUESTION 1

An administrator is able to review and modify objects in a registered ESXi cluster from a PE instance, but when the administrator attempts to deploy an Objects cluster to the same ESXi cluster, the error that is shown in the exhibit is shown. What is the appropriate configuration to verify to allow successful Objects cluster deployment to this ESXi cluster?

- A. Ensure that vCenter in PE cluster is registered using FQDN and that vCenter details in Objects UI are using FQDN.
- B. Replace the expired self-signed SSL certificate for the Object Store with a non-expired \\' signed by a valid Certificate Authority.
- C. Replace the expired self-signed SSL certificate for the Object Store with a non-expired self signed SSL certificate.
- D. Ensure that vCenter in PE cluster is registered using FQDN and that vCenter details in Objects UI are using IP address.

Correct Answer: A

Explanation: The appropriate configuration to verify to allow successful Objects cluster deployment to this ESXi cluster is to ensure that vCenter in PE cluster is registered using FQDN (Fully Qualified Domain Name) and that vCenter details in Objects UI are using FQDN. FQDN is a domain name that specifies the exact location of a host in the domain hierarchy. For example, esxi01.nutanix.com is an FQDN for an ESXi host. Using FQDN instead of IP addresses can avoid certificate validation errors when deploying Objects clusters to ESXi clusters. References: Nutanix Objects User Guide, page 9; Nutanix Objects Troubleshooting Guide, page 5

QUESTION 2

What tool can be used to report on a specific user\\'s activity within a Files environment?

- A. Prism Element Alerts menu
- B. Prism Central Activity menu
- C. Data Lens Audit Trails
- D. Files Console Usage

Correct Answer: C

Explanation: The tool that can be used to report on a specific user\\'s activity within a Files environment is Data Lens Audit Trails. Data Lens Audit Trails is a feature that provides detailed logs of all file operations performed by users on Files shares and exports, such as create, read, write, delete, rename, move, copy, etc. Data Lens Audit Trails can help administrators track and audit user actions and identify any unauthorized or malicious activities. The administrator can use Data Lens Audit Trails to filter and search for a specific user\\'s activity based on various criteria, such as file name, file type, file size, file path, file share, file server, operation type, operation time, operation status, and so on. References: Nutanix Files Administration Guide, page 98; Nutanix Data Lens User Guide

QUESTION 3

An administrator is required to place all iSCSI traffic on an isolated network.

How can the administrator meet this requirement?

- A. Create a new network interface on the CVMs via ncli.
- B. Create a Volumes network in Prism Central.
- C. Configure network segmentation for Volumes.
- D. Configure the Data Services IP on an isolated network.

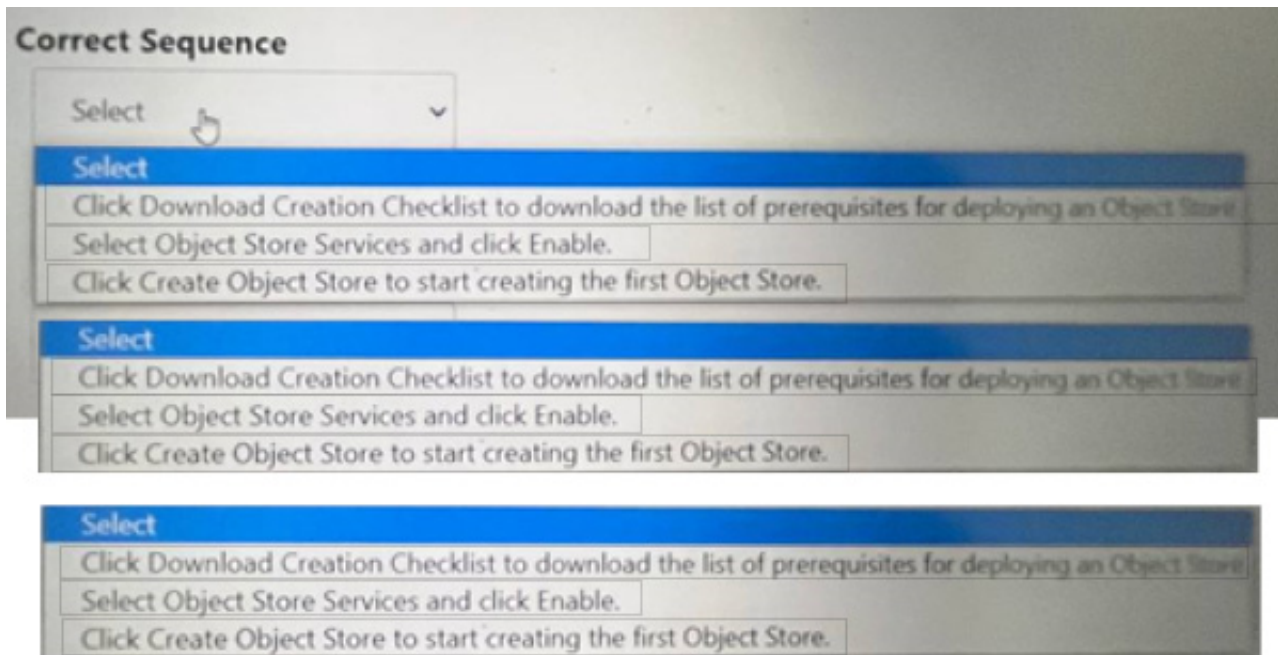
Correct Answer: C

Explanation: The administrator can meet this requirement by configuring network segmentation for Volumes. Network segmentation is a feature that allows administrators to isolate network traffic for different types of services, such as Volumes, Files, or Objects, on a Nutanix cluster. Network segmentation can improve the security, performance, and manageability of network traffic. By configuring network segmentation for Volumes, the administrator can place all iSCSI traffic on an isolated network and prevent it from interfering with other services or applications. References: Nutanix Volumes Administration Guide, page 15; Nutanix Volumes Solution Guide, page 7

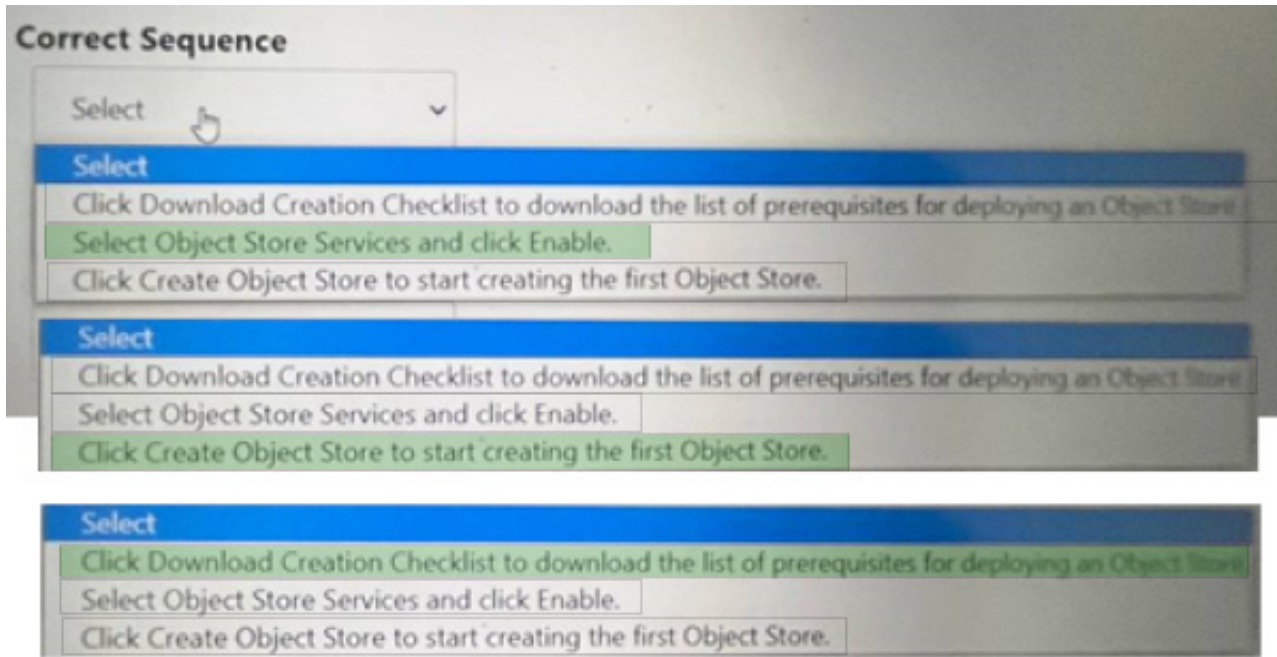
QUESTION 4

Within the Prism Central Entity > Services > Objects menu option, what is the correct task order for creating an object storage?

Hot Area:



Correct Answer:



The correct task order for creating an object store is: Select ObjectStore Service and click Enable Click Create Object Store to start creating the first Object store Click Download Creation Checklist to download the list of prerequisites for deploying an Object store The first step is to enable the ObjectStore Service, which is a service that allows users to create and manage object storage clusters on a Nutanix cluster. The second step is to create an Object store, which is an object storage cluster that provides S3-compatible access to buckets and objects for various applications and users. The third step is to download the Creation Checklist, which is a document that lists the prerequisites and configurations that are required for deploying an Object store, such as cluster details, network details, storage details, etc. The administrator should review and complete the Creation Checklist before proceeding with the deployment of the Object store.

QUESTION 5

An administrator needs to allow individual users to restore files and folders hosted in Files.

How can the administrator meet this requirement?

- A. Configure a Protection Domain for the shares/exports.
- B. Configure a Protection Domain on the FSVMs.
- C. Enable Self-Service Restore on shares/exports.
- D. Enable Self-Service Restore on the FSVMs.

Correct Answer: C

Explanation: Self-Service Restore (SSR) is a feature that allows individual users to restore files and folders hosted in Files without requiring administrator intervention. SSR can be enabled on a per-share or per-export basis, and users can access the snapshots of their data through a web portal or a Windows client application¹. References: Nutanix Files Administration Guide¹