

N10-009^{Q&As}

CompTIA Network+ Exam

Pass CompTIA N10-009 Exam with 100% Guarantee

Free Download Real Questions & Answers **PDF** and **VCE** file from:

<https://www.leads4pass.com/n10-009.html>

100% Passing Guarantee
100% Money Back Assurance

Following Questions and Answers are all new published by CompTIA
Official Exam Center

-  **Instant Download** After Purchase
-  **100% Money Back** Guarantee
-  **365 Days** Free Update
-  **800,000+** Satisfied Customers



QUESTION 1

A company wants to implement a disaster recovery site or non-critical appliance, which can tolerate a short period of downtime. Which of the following type of sites should the company implement to achieve this goal?

- A. Hot
- B. Cold
- C. Warm
- D. Passive

Correct Answer: C

A warm site is a compromise between a hot site and a cold site, providing a balance between cost and recovery time. It is partially equipped with the necessary hardware, software, and infrastructure, allowing for a quicker recovery compared

to a cold site but at a lower cost than a hot site.

Recovery Time: Warm sites can be operational within hours to a day, making them suitable for non-critical applications that can tolerate short downtimes. Cost-Effectiveness: Warm sites are more economical than hot sites as they do not

require all systems to be fully operational at all times.

Network References:

CompTIA Network+ N10-007 Official Certification Guide: Discusses disaster recovery strategies and the different types of recovery sites. Cisco Networking Academy: Provides training on disaster recovery planning and site selection. Network

+ Certification All-in-One guide: Explains the characteristics of hot, warm, and cold sites and their use cases in disaster recovery planning. Warm sites offer a practical solution for maintaining business continuity for non-critical applications, balancing the need for availability with cost considerations.

QUESTION 2

A virtual machine has the following configuration:

Pv4 address: 169.254.10.10

Subnet mask: 255.255.0.0

The virtual machine can reach colocated systems but cannot reach external addresses on the Internet. Which of the following is most likely the root cause?

- A. The subnet mask is incorrect.
- B. The DHCP server is offline.
- C. The IP address is an RFC1918 private address.

D. The DNS server is unreachable.

Correct Answer: B

Understanding the 169.254.x.x Address:

[uk.co.certification.simulator.questionpool.PList@132568f3 DHCP Server Offline:](#)

Comparison with Other Options:

Troubleshooting Steps:

References:

[CompTIA Network+ study materials on IP addressing and DHCP troubleshooting.](#)

QUESTION 3

A network administrator needs to create a way to redirect a network resource that has been on the local network but is now hosted as a SaaS solution. Which of the following records should be used to accomplish the task?

- A. TXT
- B. AAA
- C. PTR
- D. CNAME

Correct Answer: D

CNAME stands for Canonical Name, and it is a type of DNS record that creates an alias for another domain name. A CNAME record can be used to redirect a network resource that has been moved to a different location, such as a SaaS solution. For example, if a web server that was previously hosted on the local network with the domain name `www.example.com` is now hosted by a SaaS provider with the domain name `www.saasprovider.com`, a CNAME record can be created to point `www.example.com` to `www.saasprovider.com`. This way, the users can still access the web server using the original domain name, and the DNS server will resolve it to the new domain name.

QUESTION 4

Which of the following can support a jumbo frame?

- A. Access point
- B. Bridge
- C. Hub
- D. Switch

Correct Answer: D

Definition of Jumbo Frames:

[uk.co.certification.simulator.questionpool.PList@47d929cb Why Switches Support Jumbo Frames:](#)

Incompatibility of Other Devices:

Practical Application:

References:

CompTIA Network+ course materials and networking hardware documentation.

QUESTION 5

SIMULATION

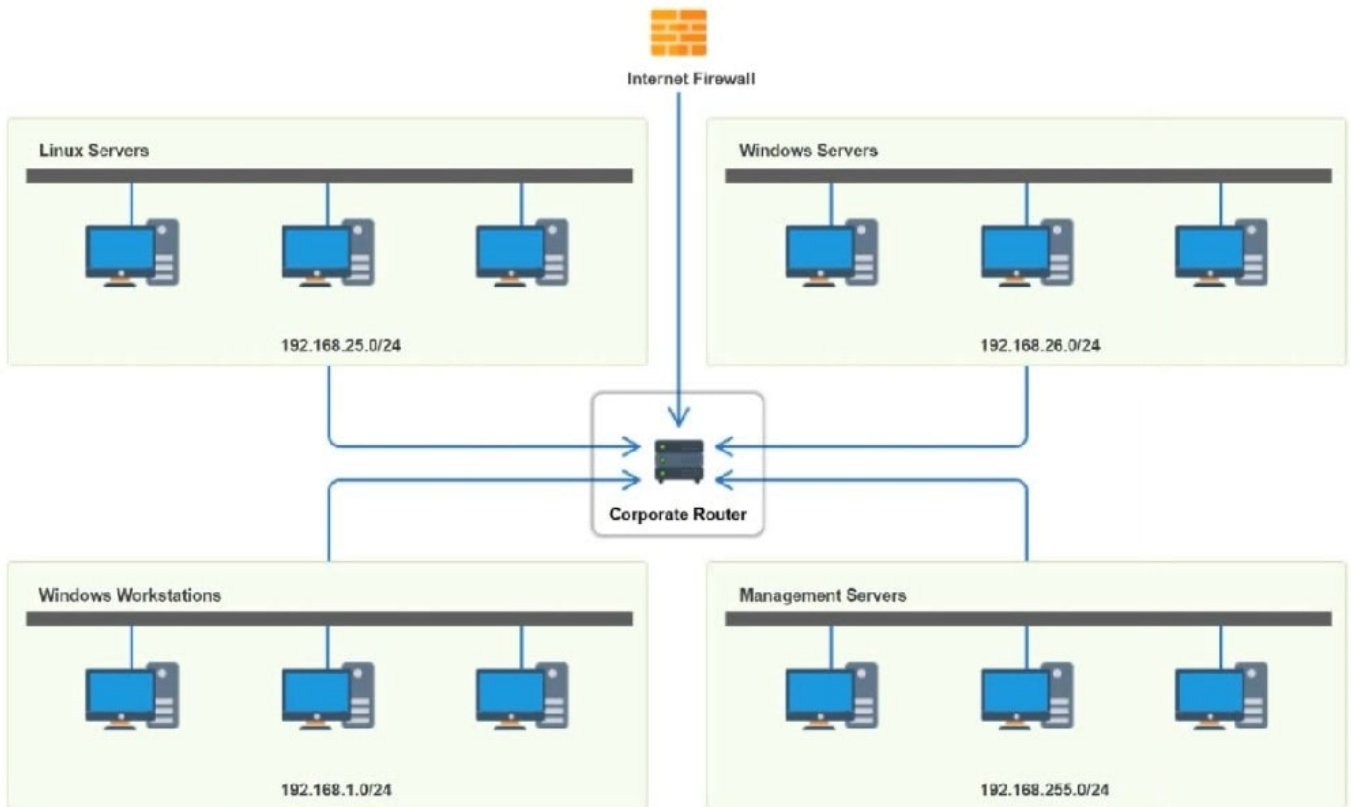
You have been tasked with implementing an ACL on the router that will:

1.
Permit the most commonly used secure remote access technologies from the management network to all other local network segments
2.
Ensure the user subnet cannot use the most commonly used remote access technologies in the Linux and Windows Server segments.
3.
Prohibit any traffic that has not been specifically allowed.

INSTRUCTIONS

Use the drop-downs to complete the ACL

If at any time you would like to bring back the initial state of the simulation, please click the Reset All button.



A. See the answer and solution below.


B. Placeholder

C. Placeholder

D. Placeholder

Correct Answer: A

Answer: See the answer and solution below.

Router Access Control List 					
Rule	Source	Destination	Protocol	Service	Action
1	192.168.255.0	192.168.26.0	TCP	SSH	Allow
2	192.168.255.0	192.168.25.0	TCP	SSH	Allow
3	192.168.255.0	192.168.1.0	TCP	SSH	Allow
4	192.168.255.0	192.168.26.0	TCP	SMB	Allow
5	192.168.255.0	Any	Any	Any	Deny
6	192.168.1.0	Any	TCP	RDP	Deny
7	192.168.1.0	Any	TCP	VNC	Deny
8	192.168.1.0	Any	Any	Any	Allow
9	Any	Any	Any	Any	Deny

[Latest N10-009 Dumps](#)

[N10-009 VCE Dumps](#)

[N10-009 Practice Test](#)